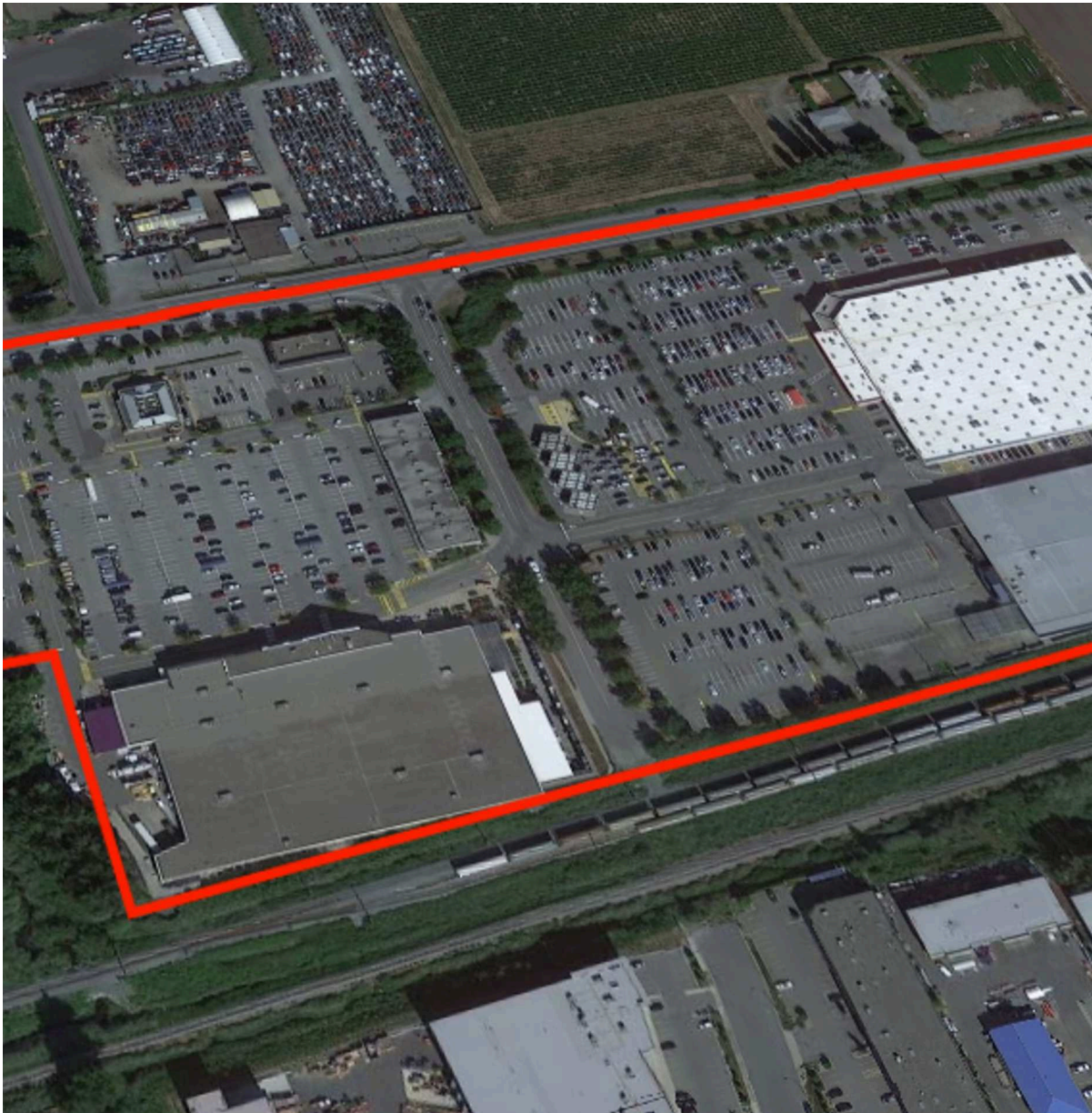




Abbotsford Power Centre, Abbotsford, British Columbia



Located at the intersection of Sumas Way & McConnell Road in Abbotsford. This unenclosed centre offers 14 units totalling 459,892 sq. ft featuring retailers such as Lowe's, Winners, and PetSmart.

Population 

1,436,030

Average Household Income 

\$109,145

Households with Children 

47%

Median Age 

40 years

All figures are within a 50 Km radius.

Source: All demographic information is Copyright 2019 by Environics Analytics (EA).



Abbotsford Power Centre

Abbotsford, British Columbia
1201 Sumas Way

Andrew Harrison
aharrison@riocan.com
403-444-2861

■ Shadow Anchor



PAD3	Chatters Salon	2,675 SF	170	Quizno Subs	1,227 SF
PAD4	Optometrists Opticians	1,975 SF	180	Angry Otter Liquor	2,224 SF
100	Lowe's	115,407 SF	180A	Tommy Gun's Original Barbershop	1,284 SF
110	PetSmart	22,583 SF	190	Warehouse One	3,733 SF
120	BFF's Kitchen & Bar	4,182 SF	200	The Shoe Company	4,200 SF
130	Home Sense & Winners	51,511 SF	210	Mountainview Insurance	1,724 SF
150	Tim Hortons	5,360 SF			
160	Hairmasters	1,320 SF			