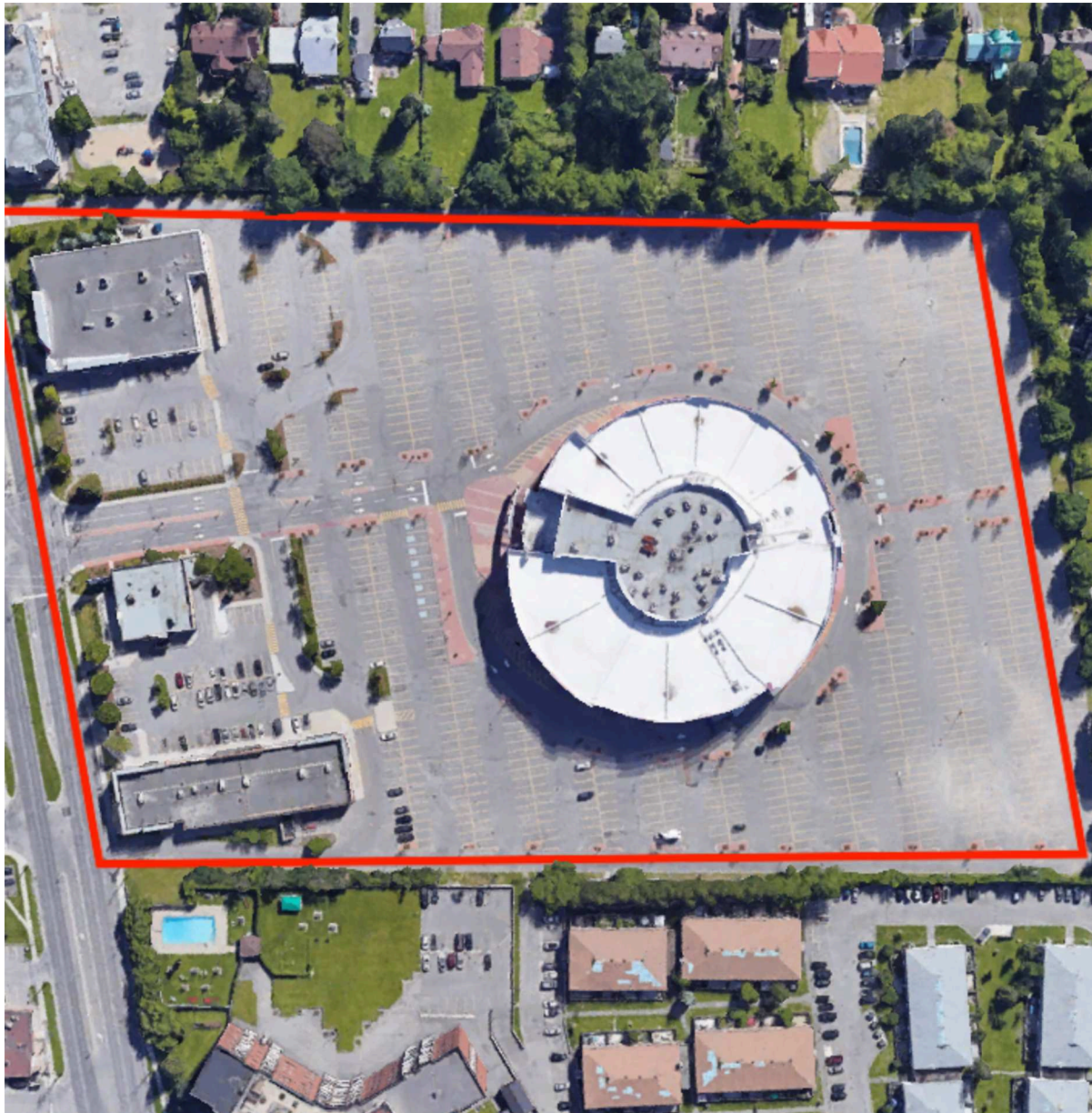






Coliseum Ottawa, Ottawa, Ontario



Located at the intersection of Carling Ave and Roseview Ave in the City of Ottawa, this unenclosed centre offers 9 units totalling 109,260 sq. ft featuring retailers such as Cineplex and Shoppers Drug Mart.

Population		Average Household Income	
442,261		\$117,861	
Households with Children		Median Age	
40%		40 years	

All figures are within a 10 Km radius.

Source: All demographic information is Copyright 2019 by Environics Analytics (EA).



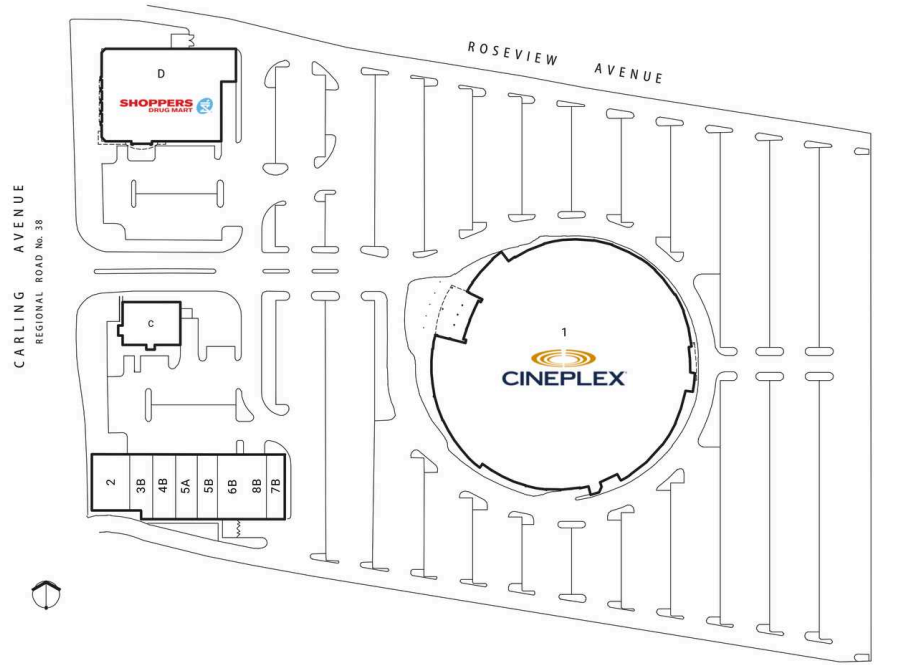
Site Plan

Coliseum Ottawa

Ottawa, Ontario
3090 Carling Avenue

Kathy Axmith
kaxmith@riocan.com
416-866-3033 x25125

■ Shadow Anchor



C	Moore's Clothing For Men	5,235 SF	5A	Available	2,677 SF
D	Shoppers Drug Mart	17,036 SF	5B	Life Labs	1,316 SF
1	Cineplex	73,584 SF	6B	Mary Brown's	2,000 SF
2	Francois Dang Dentistry	2,522 SF	7B	Games Workshop	1,204 SF
3B	Instyle Nails & Spa	1,200 SF	8B	Kabob Supreme	1,500 SF
4B	Tweezers Cuts In Style	994 SF			