



### Centre Highlights

Located at the intersection of Guelph Line and Fairview Street in Burlington, this enclosed shopping centre offers 132 units totalling 738,000 sq. ft featuring retailers such as Indigo, Winners, Denninger's, SportChek, HomeSense, Hudson's Bay and Goodlife Fitness.

#### FEATURES

- Ample parking
- Located in a heavy traffic area
- Easily accessible
- Excellent mix of national retailers
- Serves a loyal customer base
- Newly renovated

Note: All demographic information is Copyright 2018 by Environics Analytics (EA). Source: DemoStats 2017, DemoStats2018.

**Centre Address:** 777 Guelph Line, Suite 210

**City/Province:** Burlington, ON

**Property Size:** 738,000 sq. ft.

**Latitude/Longitude:** 43.34851 N, -79.79360 W

### Demographics : 10 KM Radius



Population:

**258,741**



Number of  
Households:

**98,704**



Average  
Household  
Income:

**\$106,115**

### Contact Us

**Jamie Nielsen**

Leasing Contact

Phone: 416-866-3033 x25103

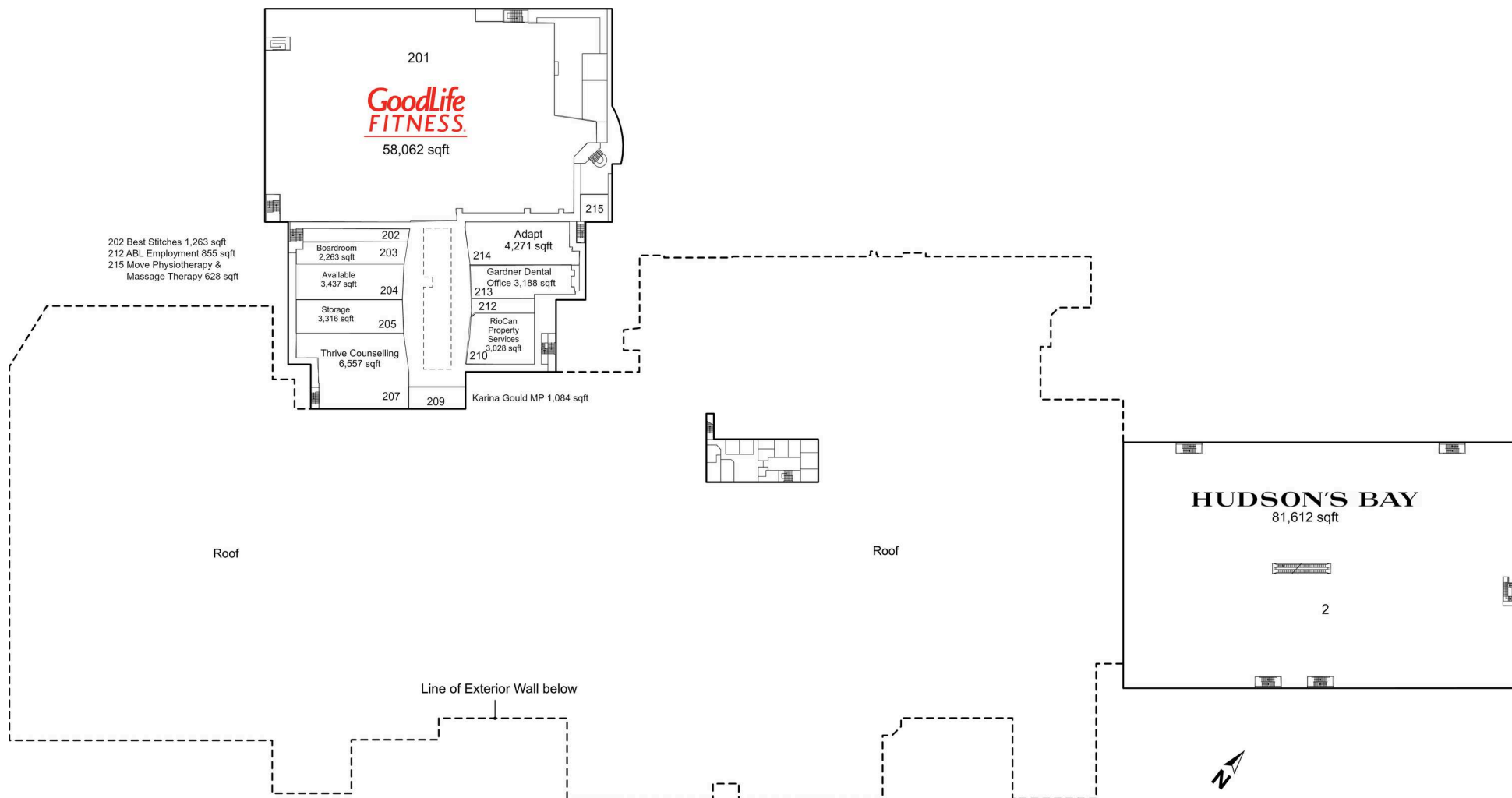
Email: [jnielsen@riocan.com](mailto:jnielsen@riocan.com)

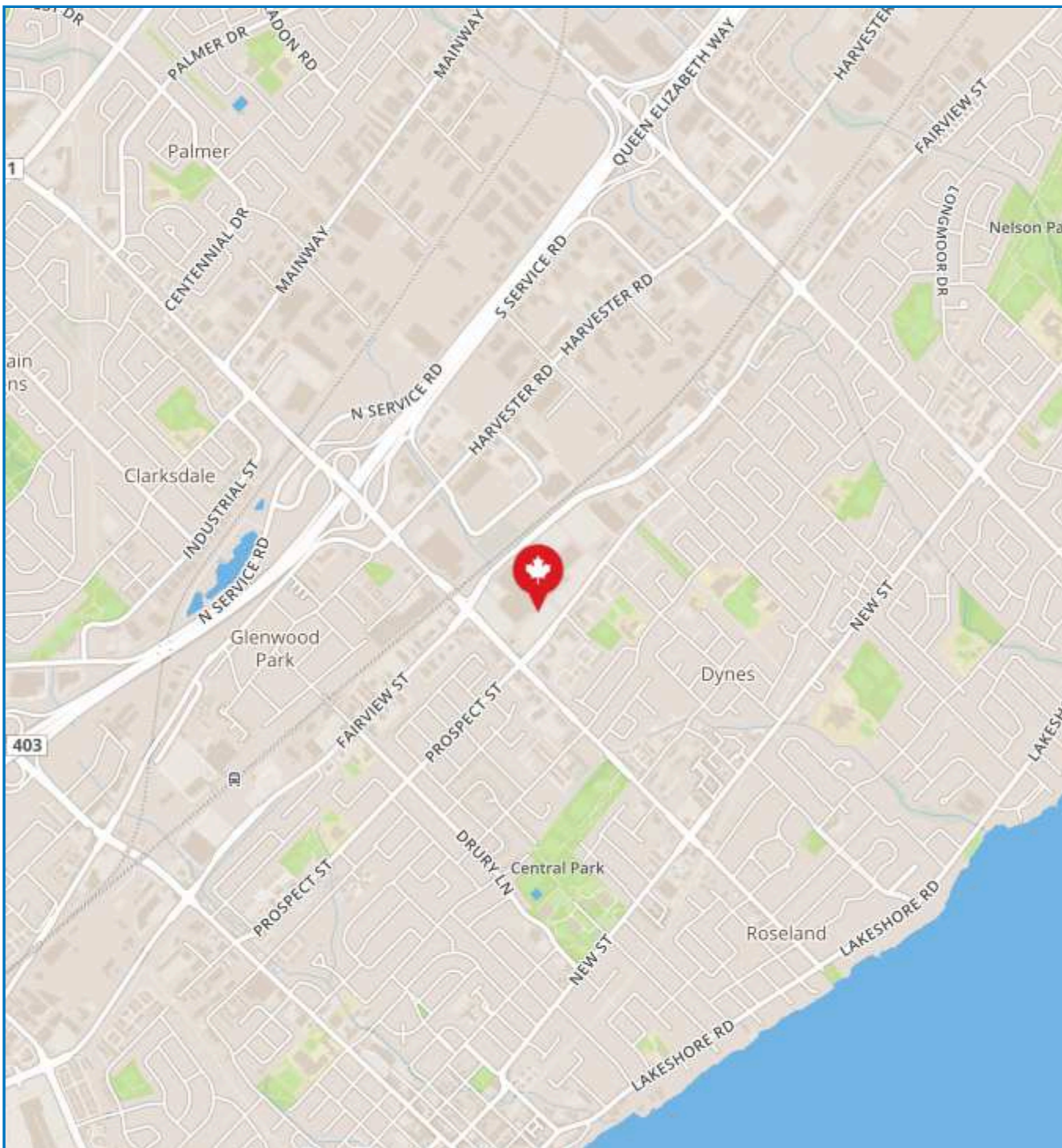
2300 Yonge Street Suite 500 P.O. Box 2386

**RioCan**

2300 Yonge Street, Suite 500 • Toronto, ON Canada M4P1E4 • 1.800.465.2733







**Demographics**



**Population:**

10 KM **258,741**

20 KM **993,561**



**Number of Households:**

10 KM **98,704**

20 KM **376,142**



**Average Household Income:**

10 KM **\$106,115**

20 KM **\$115,275**



**Median Age:**

10 KM **42**

20 KM **40**