

# 1860 Bayview, Toronto, Ontario



Located at the intersection of Broadway Ave & Bayview Ave in the City of Toronto, this grocery anchored centre offers a total of 70,318 sq. ft of prime retail space, featuring retailers such as Whole Foods, Shoppers Drug Mart, TD, and Lifelabs.

Population 


1,928,095

Average Household Income 

\$148,866

Households with Children 

32%

Average Age 

40 years

**All figures are within a 10 Km radius.**

Source: All demographic information is Copyright 2025 by Environics Analytics (EA).



# Site Plan

## 1860 Bayview

Toronto, Ontario  
1860 Bayview Avenue

Ethan Yaphe  
eyaphe@riocan.com  
416-697-9623

■ Shadow Anchor



101	Shoppers Drug Mart	10,518 SF	103	Cyclebar	3,008 SF
102A	Bioped	1,816 SF	104	TD	3,704 SF
102B	Lifelabs	1,813 SF	105	Country Dental	1,895 SF

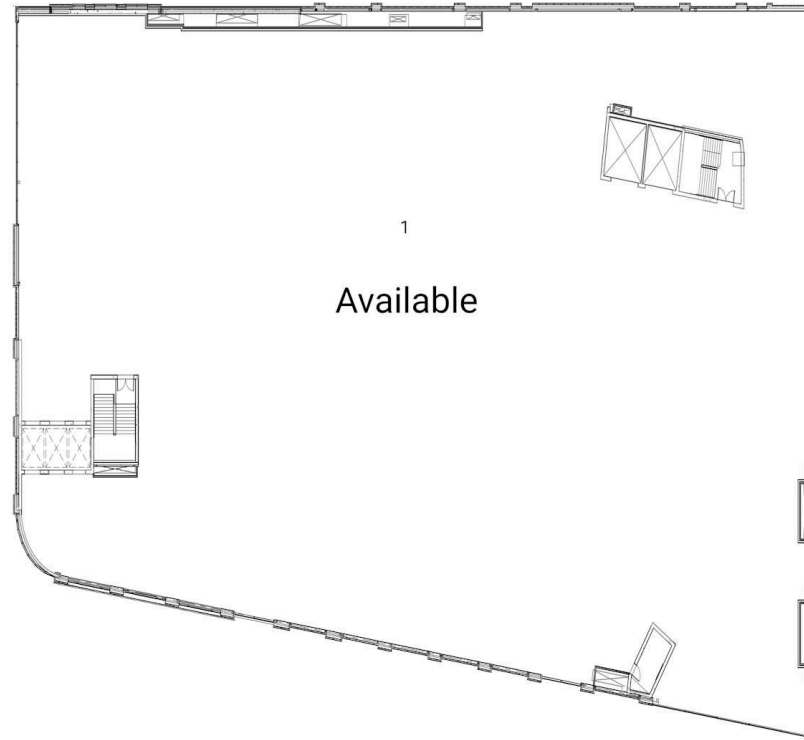
# Site Plan

## 1860 Bayview

Toronto, Ontario  
1860 Bayview  
Avenue

Ethan Yaphe  
eyaphe@riocan.com  
416-697-9623

Second Floor



■ Shadow Anchor

1 Available

47,540 SF