

FOR LEASE

# 700 LAWRENCE AVENUE WEST

## Welcome to the new centre of it all



**RIO CAN**  
REAL VISION, SOLID GROUND



OWNED AND MANAGED BY  
**RIO CAN**

**CBRE**



The newly revitalized Lawrence Allan Centre includes dynamic new retailers, a modernized interior, fully renovated food court and upgraded amenities. Since 1989 this mixed-use office/retail property has long been a place for the community to gather and will continue to be the hub of this important and rapidly growing Toronto neighbourhood. With a focus on enhancing the existing spirit of the neighbourhood, Riocan has ensured the design, service and retail mix suit the immediate and long-term needs of the community.

**Step up for immediate lease opportunities and take advantage of...**



Lawrence Ave. W.  
subway station at the corner



On-site parking  
@ 1:1,200 sq. ft. leased



Quick and easy access to Allen  
Expressway



Newly improved Shopping Centre with  
an abundance of on-site amenities



Renovated Food Court

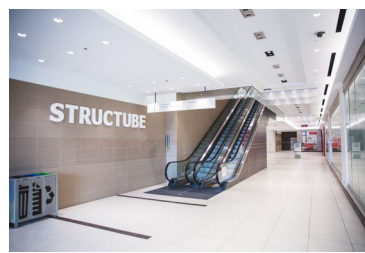
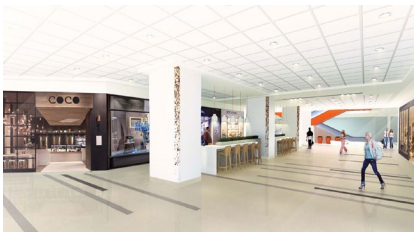


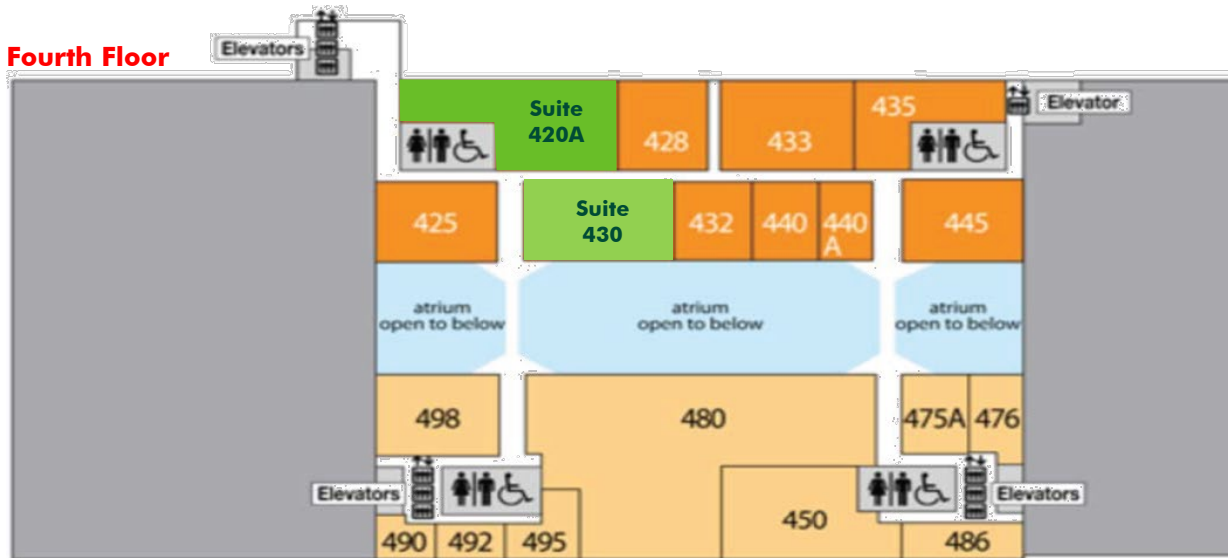
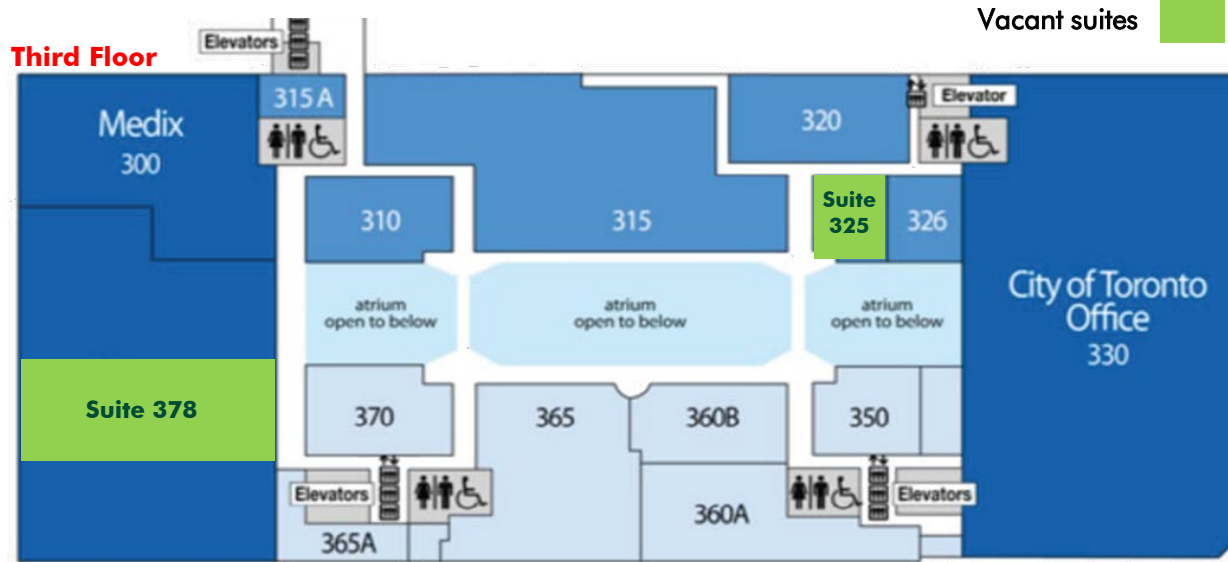
On-site Fitness Centre



Countless retail options  
(Canadian Tire, Marshalls, Fortino's, etc.)

# LOOK inside





## LEASE DETAILS

NEW MODEL SUITE AVAILABLE

Available Space:

Suite	Area (sq. ft.)	Possession
Suite 325:	2,640	Immediate
Suite 378:	8,325	Immediate
Suite 420A:	3,929	Immediate
Suite 425:	3,145	LEASED
Suite 430:	2,899	Immediate

Rental Rates:

Net Rent (PSF): Contact Listing Broker

Additional Rent:  
(2024 Estimate) + \$22.52 per sq. ft.



\*Sales Representative | ALL OUTLINES ARE APPROXIMATE

This disclaimer shall apply to CBRE Limited, Real Estate Brokerage, and to all other divisions of the Corporation; to include all employees and independent contractors ("CBRE"). The information set out herein, including, without limitation, any projections, images, opinions, assumptions and estimates obtained from third parties (the "Information") has not been verified by CBRE, and CBRE does not represent, warrant or guarantee the accuracy, correctness and completeness of the Information. CBRE does not accept or assume any responsibility or liability, direct or consequential, for the Information or the recipient's reliance upon the Information. The recipient of the Information should take such steps as the recipient may deem necessary to verify the Information prior to placing any reliance upon the Information. The Information may change and any property described in the Information may be withdrawn from the market at any time without notice or obligation to the recipient from CBRE. CBRE and the CBRE logo are the service marks of CBRE Limited and/or its affiliated or related companies in other countries. All other marks displayed on this document are the property of their respective owners. All Rights Reserved. Mapping Sources: Canadian Mapping Services [canadamapping@cbre.com](mailto:canadamapping@cbre.com); MapPoint, DMTI Spatial, Environics Analytics, Microsoft Bing, Google Earth

## NOTABLE ON-SITE RETAILERS & AMENITIES

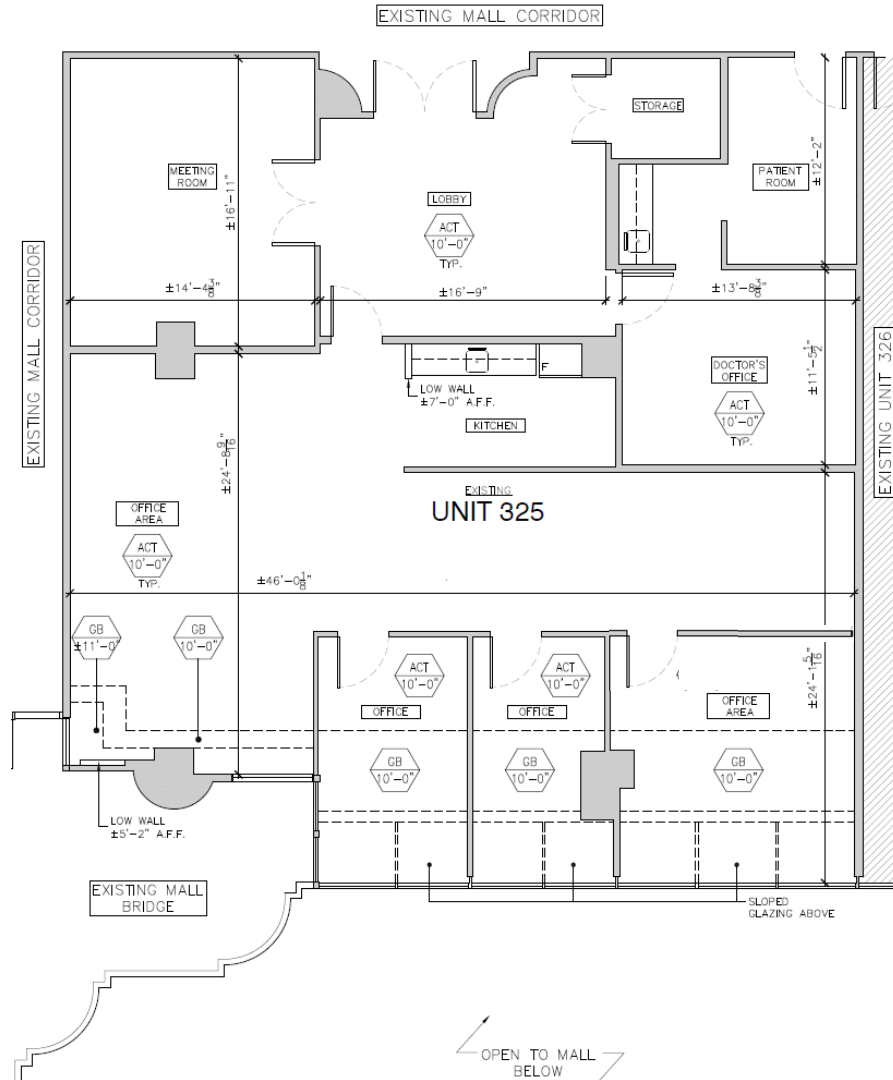
### Services & Retailers

Fit for Less  
Canadian Tire  
Marshalls  
HomeSense  
Structube  
Fortino's  
Dollarama  
PetSmart  
The Source  
Hakim Optical  
Dentistry in Motion  
First Chiropractic Care  
The Foot Institute  
Service Canada

### Food & Eateries

Tim Horton's  
McDonald's  
KFC  
Bar BURRITO  
Real Fruit Bubble Tea  
Asian Gourmet  
Pita Land  
Mango Thai Kitchen  
Wikki Hut

Suite 325: 2,640 square feet



## CONTACT US

### DAVID CHIARELLO\*

Associate Vice President  
T +1 416 495 6220  
david.chiarell@cbre.com

### STEPHEN BROWN\*

Vice President  
T +1 416 495 6239  
steve.brown@cbre.com

### BYRON AHMET\*

Senior Vice President  
T +1 416 815 2354  
byron.ahmet@cbre.com

### CBRE Limited, Real Estate Brokerage

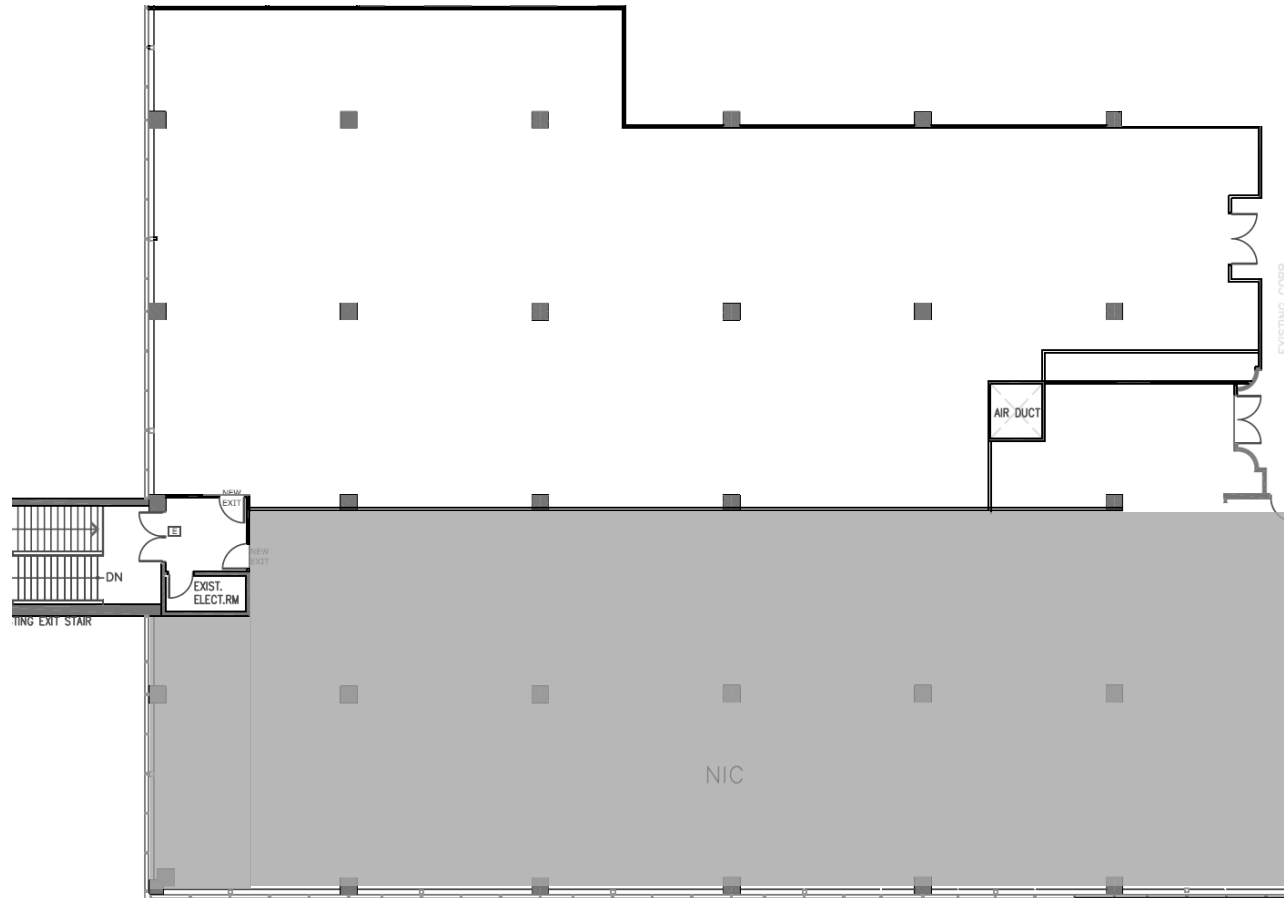
2005 Sheppard Avenue E.  
Suite 800  
Toronto, ON M2J 5B4

**RIO CAN**  
REAL VISION. SOLID GROUND  
www.cbre.ca

\*Sales Representative

**CBRE**

Suite 378: 8,325 square feet



## CONTACT US

### DAVID CHIARELLO\*

Associate Vice President  
T +1 416 495 6220  
david.chiarell@cbre.com

### STEPHEN BROWN\*

Vice President  
T +1 416 495 6239  
steve.brown@cbre.com

### BYRON AHMET\*

Senior Vice President  
T +1 416 815 2354  
byron.ahmet@cbre.com

### CBRE Limited, Real Estate Brokerage

2005 Sheppard Avenue E.  
Suite 800  
Toronto, ON M2J 5B4

**RIO CAN**  
REAL VISION. SOLID GROUND

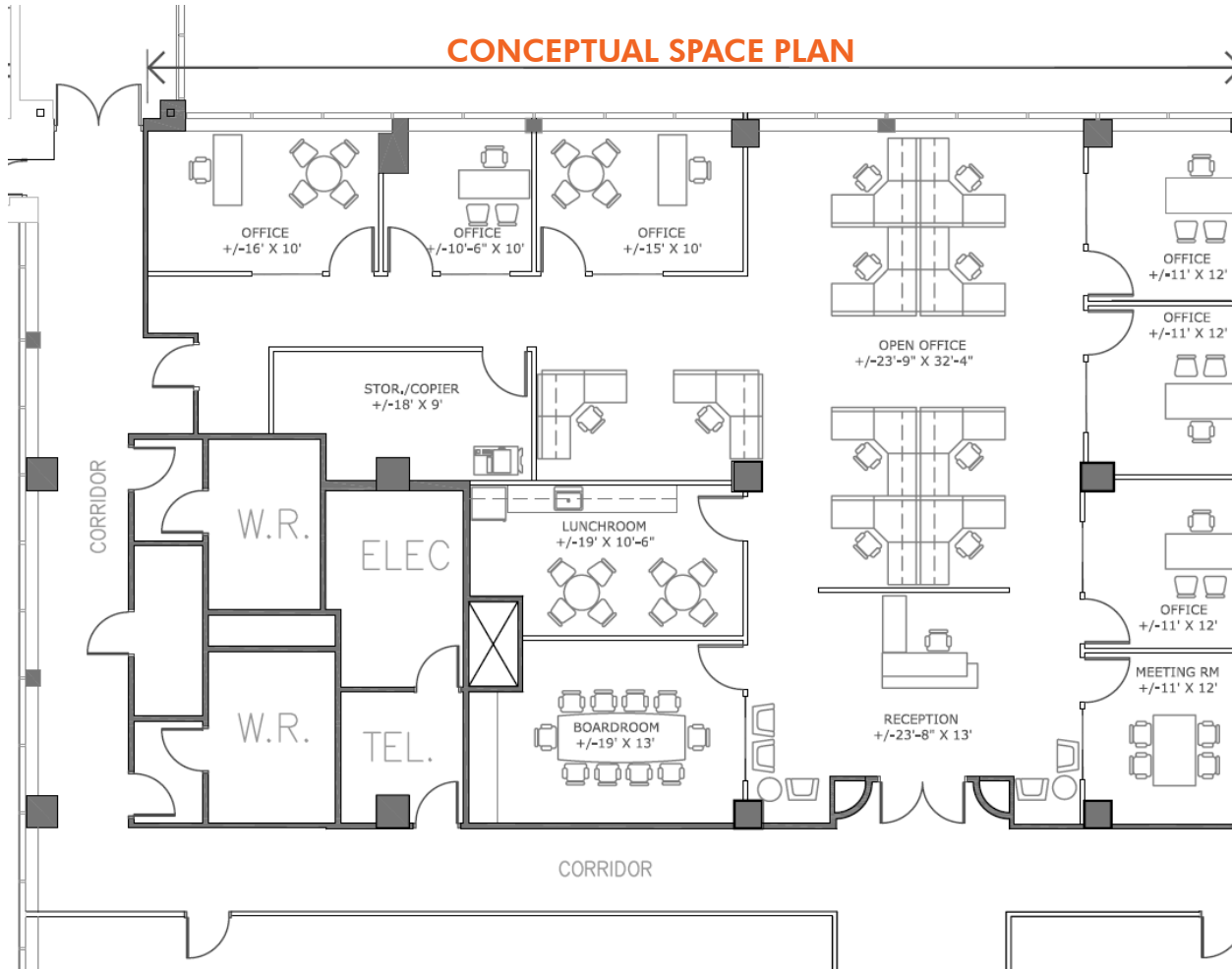
www.cbre.ca

\*Sales Representative

# CBRE

Suite 420A: 3,929 square feet

## CONCEPTUAL SPACE PLAN



## CONTACT US

### DAVID CHIARELLO\*

Associate Vice President  
T +1 416 495 6220  
david.chiarell@cbre.com

### STEPHEN BROWN\*

Vice President  
T +1 416 495 6239  
steve.brown@cbre.com

### BYRON AHMET\*

Senior Vice President  
T +1 416 815 2354  
byron.ahmet@cbre.com

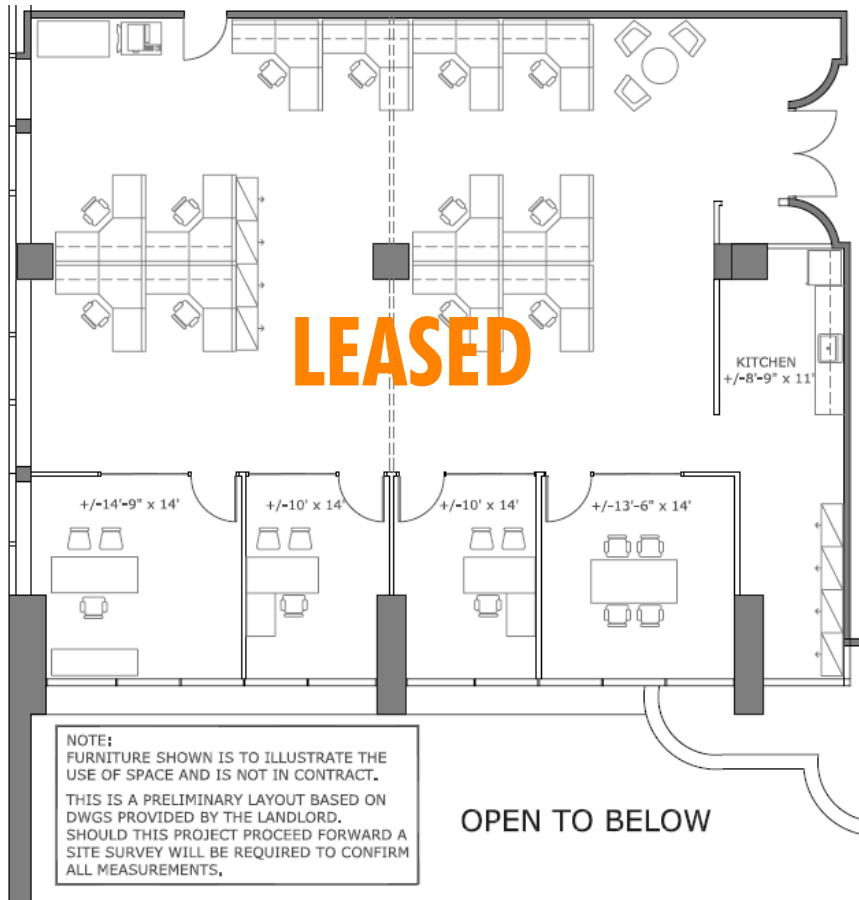
### CBRE Limited, Real Estate Brokerage

2005 Sheppard Avenue E.  
Suite 800  
Toronto, ON M2J 5B4

**RIO CAN**  
REAL VISION. SOLID GROUND.  
www.cbre.ca

\*Sales Representative

Suite 425: 3,145 square feet – **MODEL SUITE**



## CONTACT US

### DAVID CHIARELLO\*

Associate Vice President  
T +1 416 495 6220  
david.chiarello@cbre.com

### STEPHEN BROWN\*

Vice President  
T +1 416 495 6239  
steve.brown@cbre.com

### BYRON AHMET\*

Senior Vice President  
T +1 416 815 2354  
byron.ahmet@cbre.com

**CBRE Limited, Real Estate Brokerage**

2005 Sheppard Avenue E.  
Suite 800  
Toronto, ON M2J 5B4

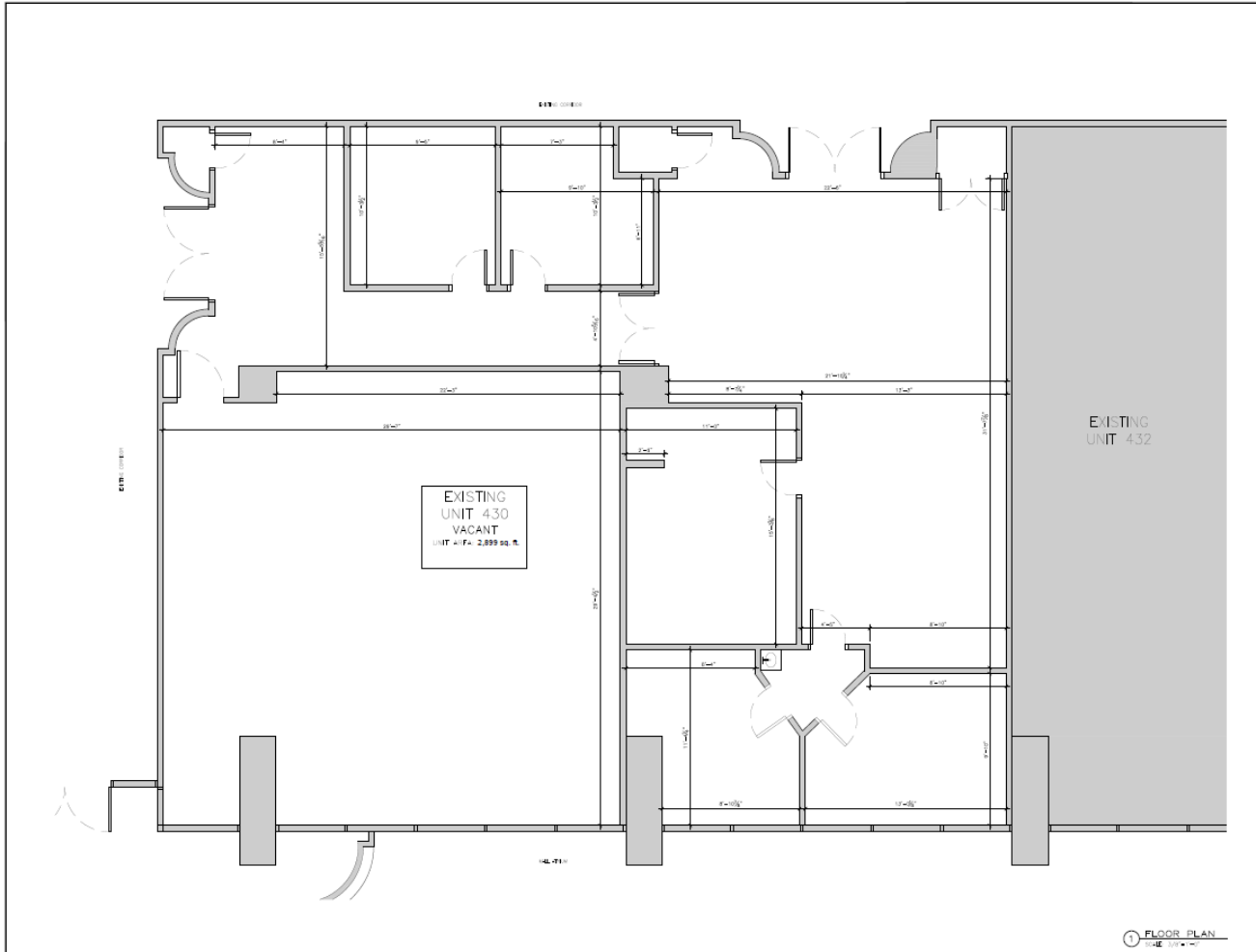
**RIO CAN**  
REAL VISION. SOLID GROUND.  
www.cbre.ca

\*Sales Representative

**CBRE**



Suite 430: 2,899 square feet



## CONTACT US

**DAVID CHIARELLO\***

Associate Vice President  
T +1 416 495 6220  
david.chiarelo@cbre.com

**STEPHEN BROWN\***

Vice President  
T +1 416 495 6239  
steve.brown@cbre.com

**BYRON AHMET\***

Senior Vice President  
T +1 416 815 2354  
byron.ahmet@cbre.com

**CBRE Limited, Real Estate Brokerage**

2005 Sheppard Avenue E.  
Suite 800  
Toronto, ON M2J 5B4

**RIO CAN**  
REAL VISION. SOLID GROUND.  
www.cbre.ca

\*Sales Representative