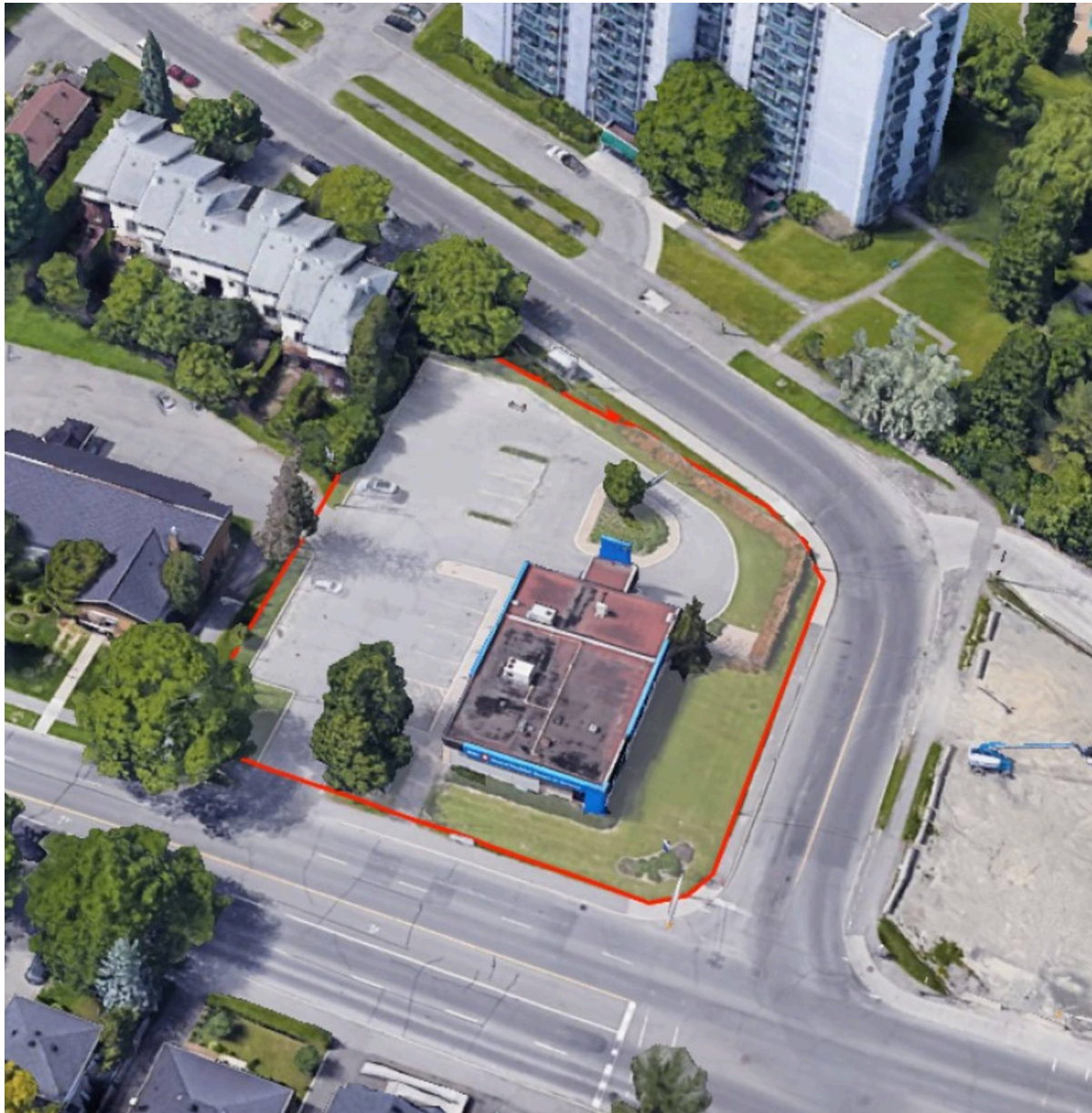




945 Smyth Road, Ottawa, Ontario




Located at the intersection of Smyth Rd & Russel Rd in the City of Ottawa, this unenclosed centre offers 1 unit totalling 8,532 sq. ft featuring Bank of Montreal.

Population 

527,618

Average Household Income 

\$123,873

Households with Children 

31%

Average Age 

40 years

All figures are within a 10 Km radius.

Source: All demographic information is Copyright 2024 by Environics Analytics (EA).

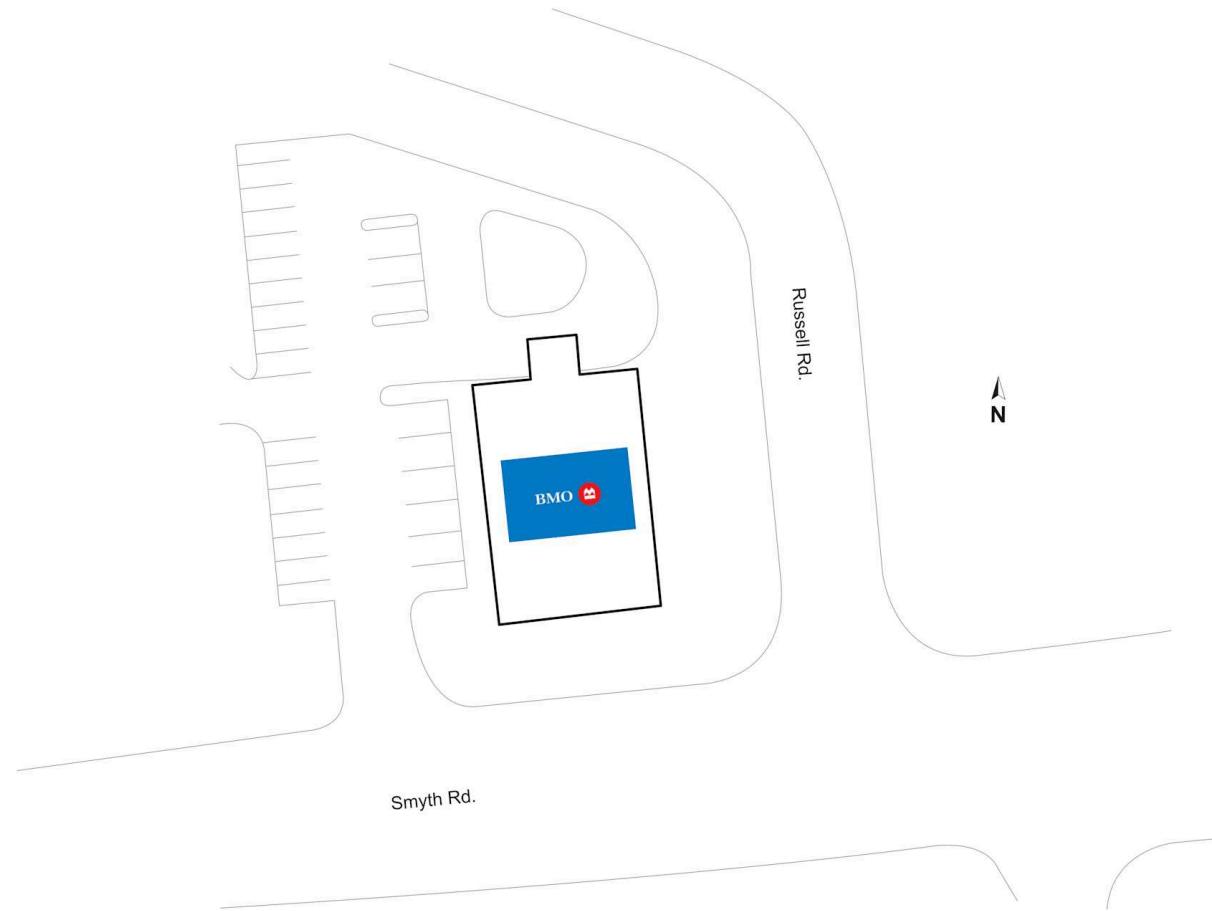


945 Smyth Road

Ottawa, Ontario
945 Smyth Rd

Cody Perza
cperza@riocan.com
647-388-9036

■ **Shadow Anchor**



1

Bank of Montreal

8,532 SF