

# Galleries Mille-Iles, Rosemere, Quebec




Located at the intersection of Boulevard Cure-Labelle & Highway 640 in Rosemere, this grocery anchored centre offers 7 units totalling 252,450 sq. ft featuring retailers such as Maxi, Leon's, World Gym, and Bercu en Gros.

Population 

409,815

Average Household Income 

\$128,218

Households with Children 

48%

Average Age 

42 years

**All figures are within a 10 Km radius.**

Source: All demographic information is Copyright 2024 by Environics Analytics (EA).

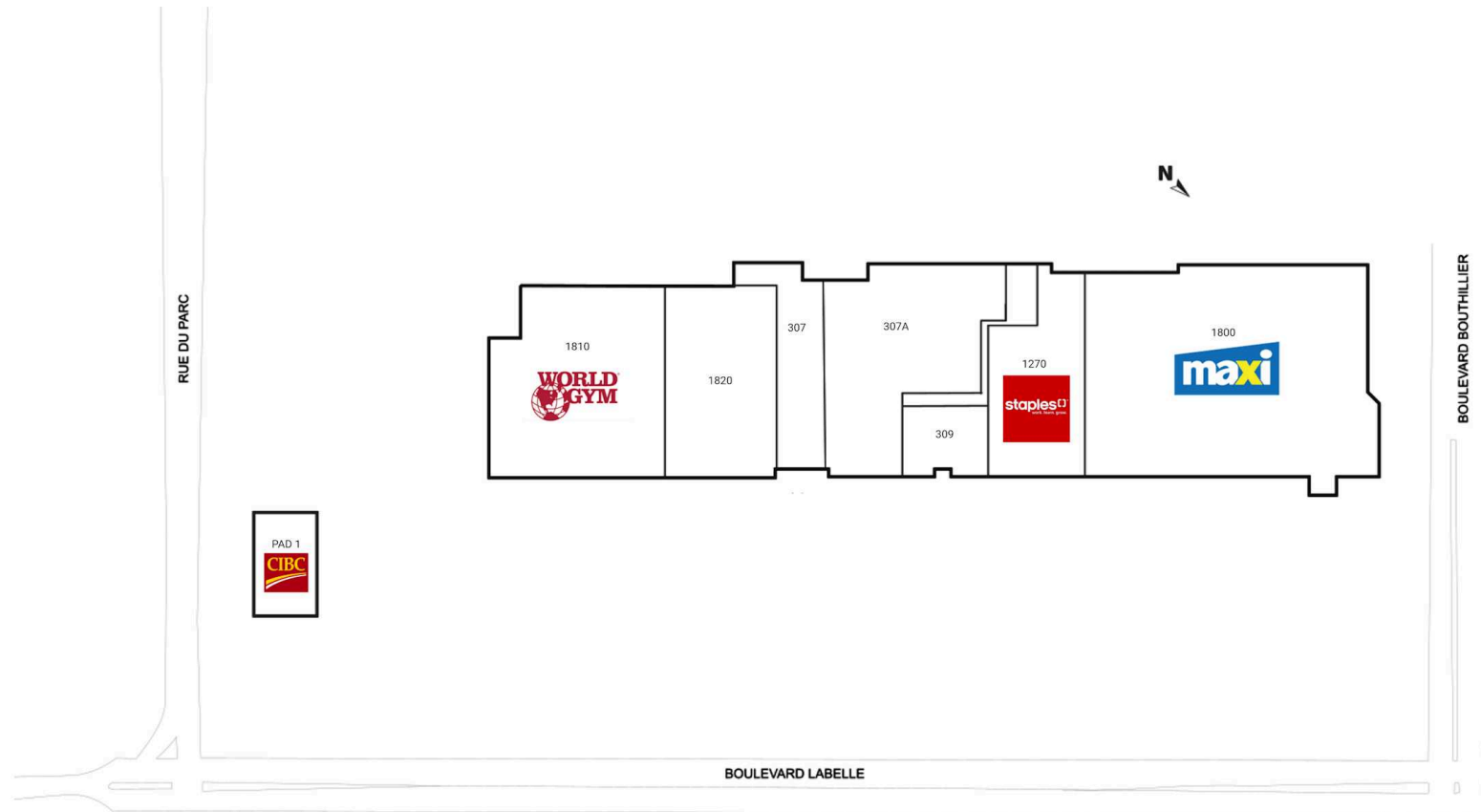


## Galeries Mille-illes

Rosemere, Quebec  
299 - 339 Labelle  
Boulevard

Andrew Mikhail  
andrew.mikhail@harden.ca  
514-679-8892

■ Shadow Anchor



PAD 1	CIBC	9,189 SF	1270	Staples	25,569 SF
307	Surplus RD	18,371 SF	1800	Maxi	87,528 SF
307A	Renaissance	28,090 SF	1810	World Gym	49,122 SF
309	SAQ	10,523 SF	1820	Village Des Magies Prix	23,675 SF