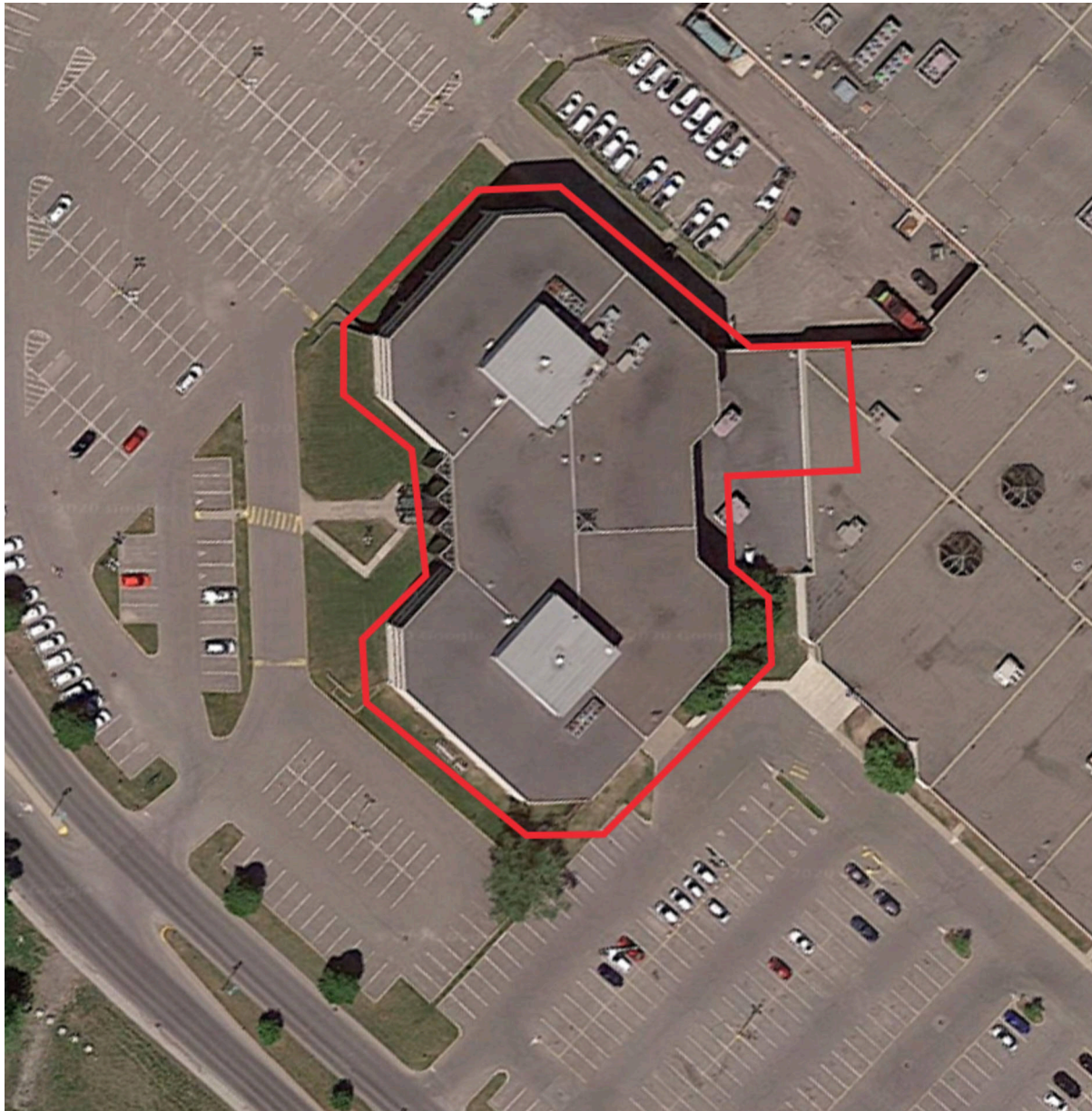


# Galleries Laurentides, St. Jerome, Quebec



Located at the intersection of Boulevard des Laurentides and Boulevard Lachapelle in Saint-Jérôme, this office space offers three floors totalling 30,314 sq. ft.

Population 

139,624

Average Household Income 

\$99,479

Households with Children 

39%

Average Age 

42 years

**All figures are within a 10 Km radius.**

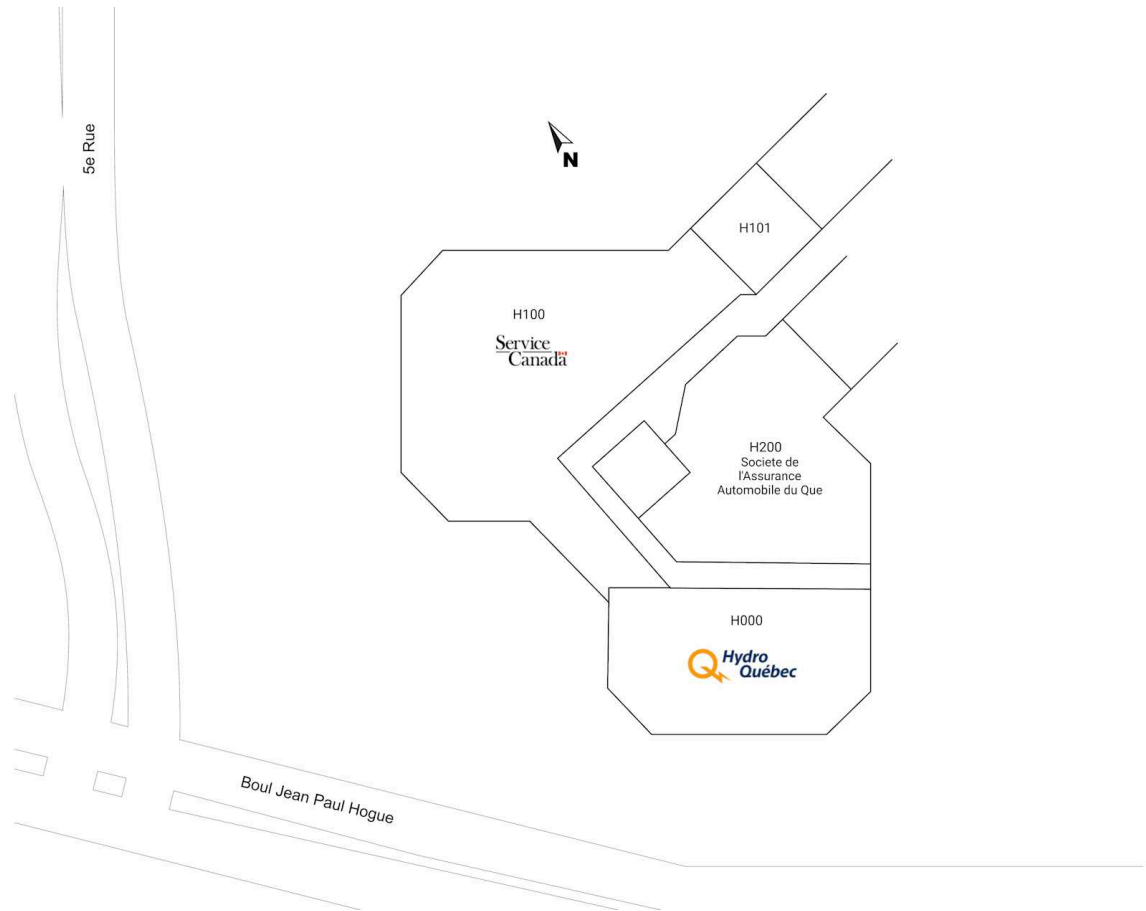
Source: All demographic information is Copyright 2024 by Environics Analytics (EA).

## Galleries Laurentides

St. Jerome, Quebec  
500 Boulevard des Laurentides

Gina Mastromonaco  
gina.mastromonaco@harden.ca  
514-232-7570

■ Shadow Anchor



H010	Hydro Quebec	32,911 SF	H101	Available	3,000 SF
H011	Hydro Quebec	33,730 SF	H200	Societe de l'Assurance Automobile du Que	8,176 SF
H012	Hydro Quebec	33,730 SF			
H100	Service Canada	18,675 SF			